



Woodford House, Chelsea Creek  
London SW6

GARTON JONES.COM





# Woodford House, Chelsea Creek London, SW6

GARTON JONES.COM

11 Park Street  
Chelsea Creek  
London  
SW6 2FS

Sales +44 (0) 20 7824 7090  
paul@gartonjones.com  
www.gartonjones.com

## £700 Per Week

AVAILABLE TO VIEW — This Stunning & stylish fully furnished 5th Floor Manhattan apartment offers an impressive balcony overlooking the canal with great views of Chelsea Creek. The apartment benefits from a spacious open plan reception room with an integrated modern kitchen leading to the balcony, luxury bathroom. There is wood flooring, modern décor, good storage and fitted wardrobe to the bedroom. The Development boasts a 24-hour concierge services, residents Spa and Fitness centre - with swimming pool, Gymnasium and treatment room's. The development is within walking distance of the stylish King's Road and Chelsea Harbour, with its many restaurants, bars and boutiques are easily accessible. Transport links can be found in under a mile with Imperial Wharf Overground station (0.2mile) and Fulham Broadway Underground (0.6mile).

Deposit — 5 Weeks

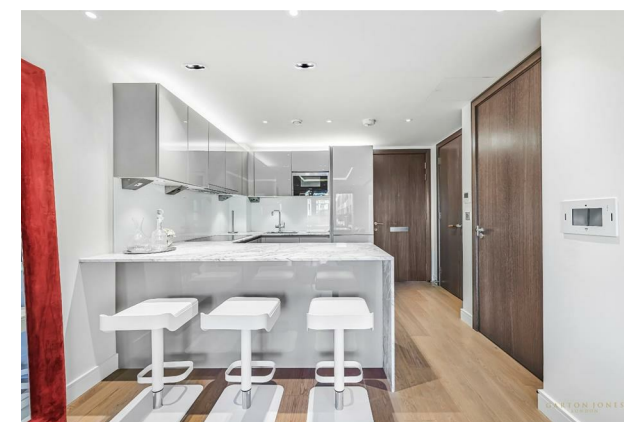
Contract — 12 Months

Council Tax — London Borough Of  
Hammersmith & Fulham — Band E

EPC — B (90)

EPC certificate available on request.

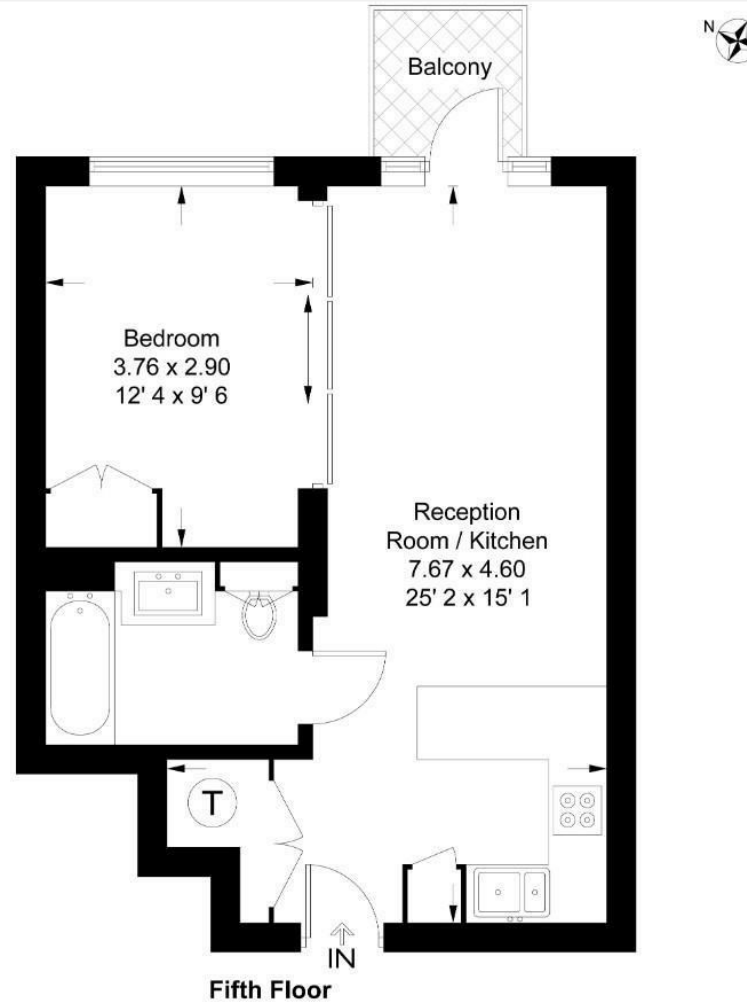
- Balcony with great development views
- Manhattan Style One Bedroom Apartment
- Located on The 5th Floor With Lift
- Fully Furnished With Fashionable Furniture
- Stylish Open Plan Apartment
- Modern Décor
- Onsite Gym & Swimming Pool
- 24 Hour Concierge
- 0.2m to Imperial Wharf Overground — 0.6m To Fulham Broadway Underground Station
- EPC B (90)



**Woodford House**

Approximate Gross Internal Area = 455 sq ft / 42.3 sq m

GARTON JONES  
LONDON



This plan is not to scale and must be used as layout guidance only. All measurements and areas are approximate and should not be relied upon to provide accurate information. This plan must not be relied upon when making property valuations, design considerations or any other such relevant decisions. We accept no responsibility or liability (whether in contract, tort or otherwise) in relation to any loss whatsoever arising from or in connection with any use of this plan or the adequacy, accuracy or completeness of it or any information within it.





